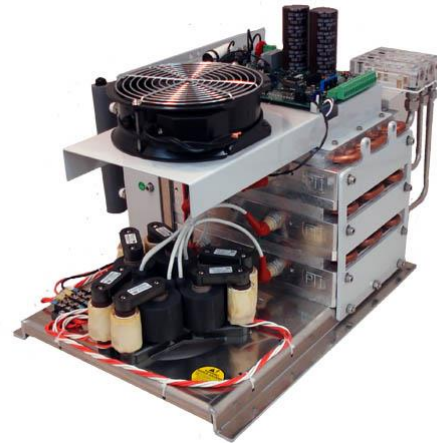




SPECIALISTS IN OZONE TECHNOLOGY

450g @ 5% Wt.

390g @ 10% Wt.



ELECTRICAL RATINGS

Voltage	3Φ 240 VAC
Current	10.8 Amps
Frequency	50 / 60 Hz
Power	3600 Watts

PERFORMANCE

Model	Pressure	Flow	Std. Flow
G1	15 psi	90 LPM	115 SLPM
G1E	10 psi	94 LPM	125 SLPM
G2	20 psi	43 LPM	50 SLPM
Heat Load	12300 BTU/hr		
Cooling*	Water cooled		
Water Flow	1 -3 GPM		

* Control water temperature for relative humidity to prevent condensation.

MAXIMUMS

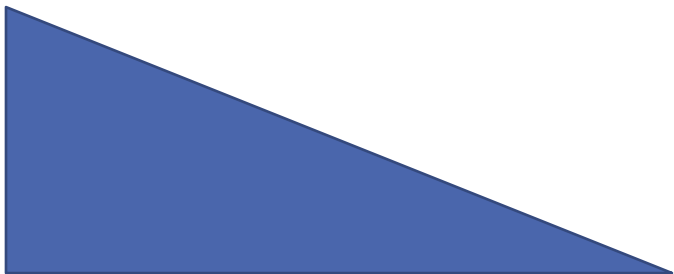
Ambient Temperature	105 °F
Block Temperature	160 °F
Devices Temperature	200 °F
Voltage	280 VAC
O2 Pressure	98 psi
Water Pressure	71 psi

OTHER SPECIFICATIONS

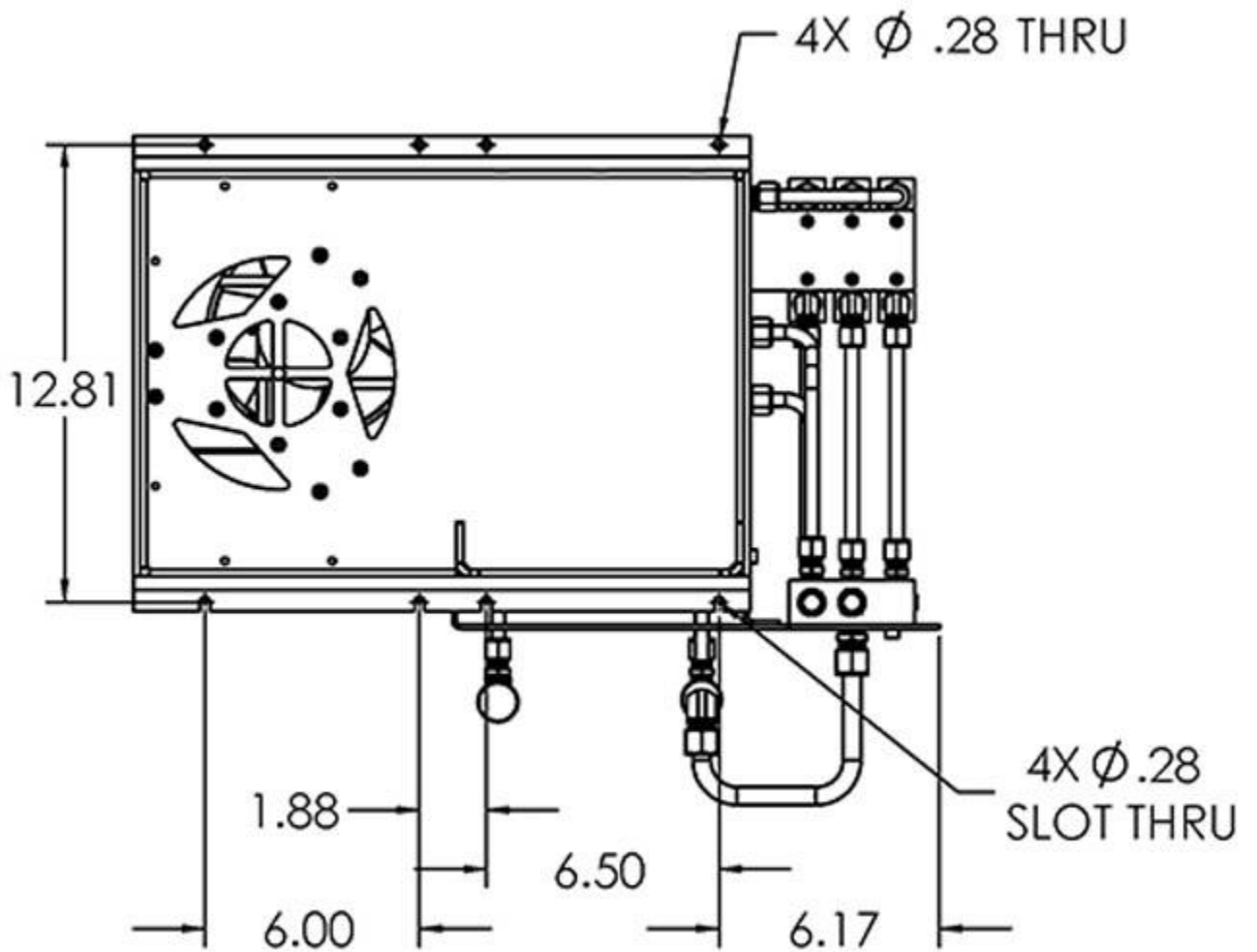
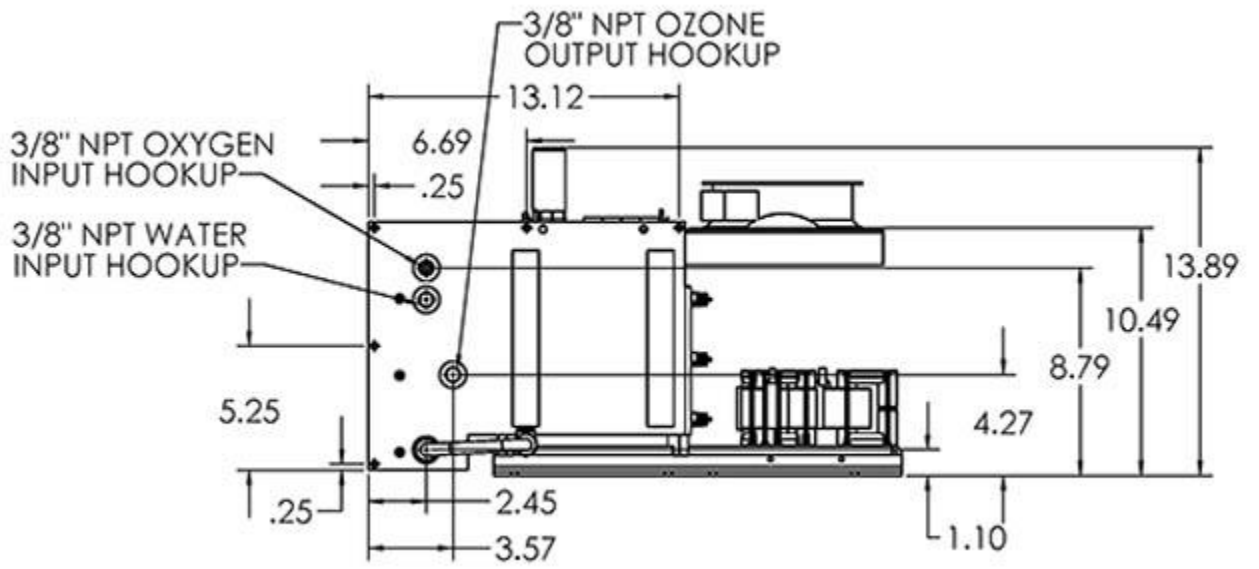
	SI	Metric
Weight	140 lbs.	63.5 kg
Length	22.54 in.	572.5 mm
Width	18.74 in.	476 mm
Height	13.89 in.	352.8 mm

- Microprocessor controlled
- UL Listed
- Microchannel design
- Precise ozone control

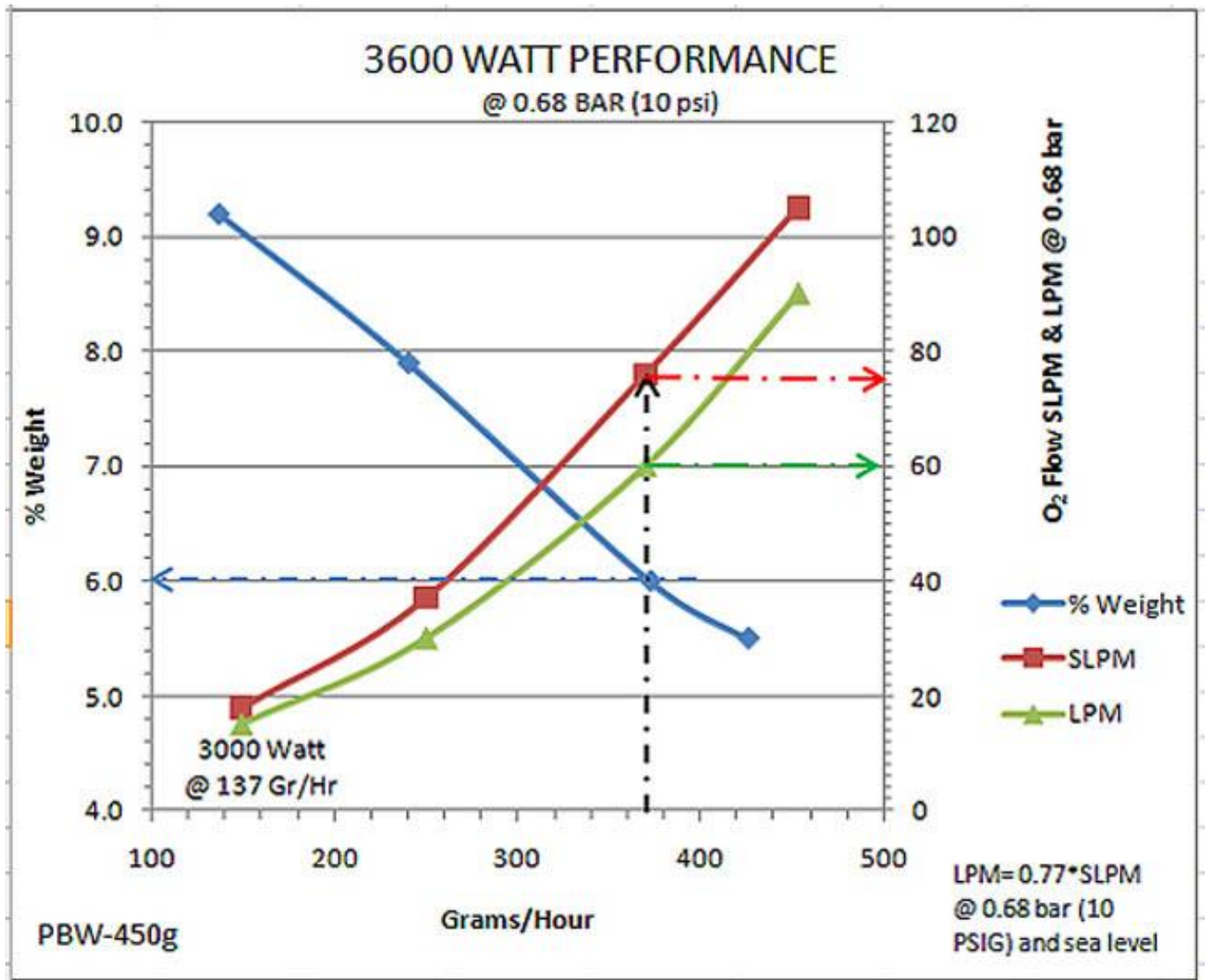
SAFE EFFICIENT
SILENT ADVANCED



Side Water/ Gas connections



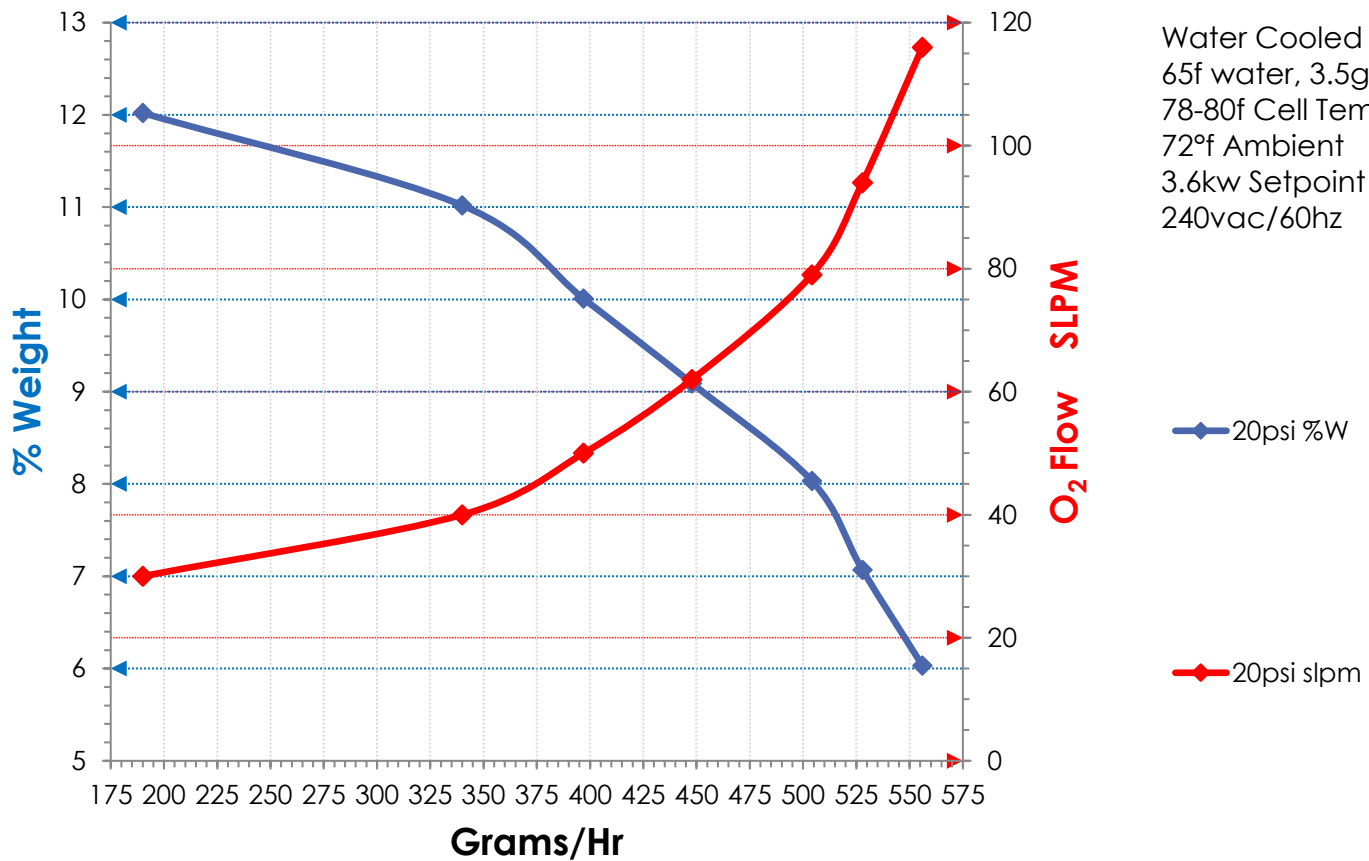
Bottom Mouting



GEN 1 Ozone Output

450g Gen2 [390g/hr @ 10%]

Release
3/5/20



GEN2 Ozone Output